

EYRE ARMS

BEER MATTERS



Issue 497 June 2019

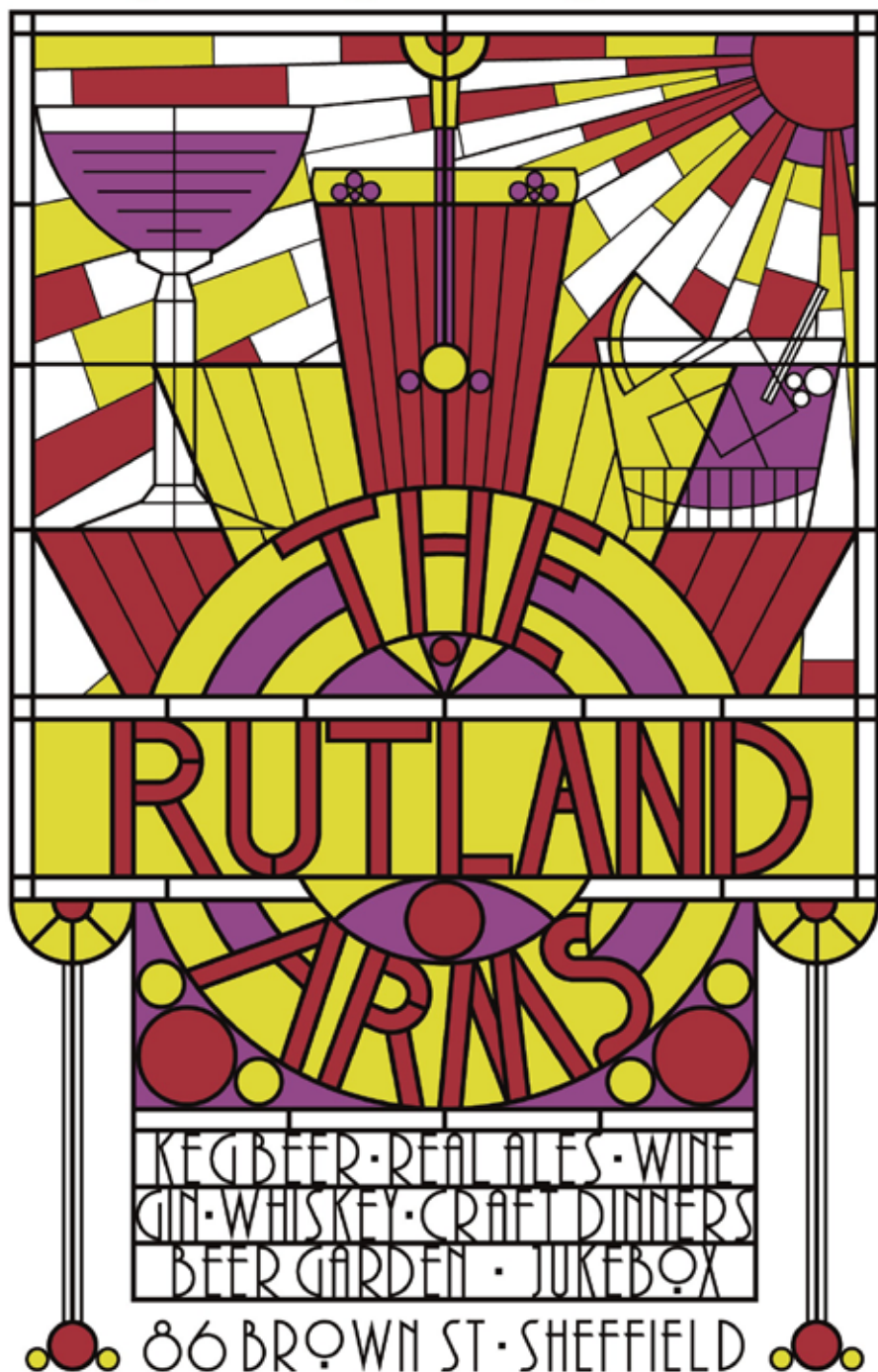
sheffield.camra.org.uk

[/sheffieldcamra](https://www.facebook.com/sheffieldcamra)

[@shfcamra](https://twitter.com/shfcamra)



Campaign
for
Real Ale





Editor

Andy Cullen

beermatters@sheffield.camra.org.uk

Articles, comments and suggestions are most welcome so please send them in*

Advertising

Dom Nelson and Andy Shaw

advertising@sheffield.camra.org.uk

Quarter Page £50+VAT

Half Page £70+VAT

Full Page £100+VAT

Inside Front Cover £110+VAT

Back Cover £120+VAT

Discounts for regular placements

PDFs or high-res bitmaps
(300 dpi) only please

Design from £30

Updates from £10

Next copy deadline
Friday 7 June

Opinions expressed are those of the author and may not represent those of CAMRA, the local branch or editor.
Beer Matters is © CAMRA Ltd.

*For legal reasons a full name and address must be provided with all contributions.

The free magazine of CAMRA Sheffield & District

Issue 497 June 2019

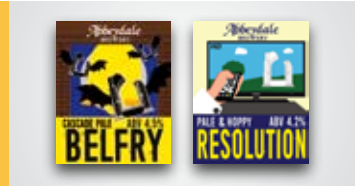
News 5
Cider & Perry Championships
Sheffield Beer Census Results



Pubs 8
Railway Hotel, Bramall Lane
Joiners Arms, Bakewell
Crow Inn, Scotland Street
Birdhouse, Sydney Street



Breweries 14
Abbeydale
Welbeck Abbey
Fuggle Bunny



Awards 18
Pubs of the Month
Best Real Heritage Pubs



Travel 22
Hopping around Estonia
A Grand Good Friday Day Out



Festivals 26

Quiz Answers 28

Diary 28

Committee 30



LOXLEY BREWERY
@ WISEWOOD INN

GREAT FOOD

539 Loxley Road
Sheffield



wisewoodinn.co.uk
loxleybrewery.co.uk



National Cider & Perry Championships

CAMRA has announced the best Cider and Perry in Britain to be Mayfayre's Cider (Herefordshire) and Cleeve Orchard's Perry (Ross-on-Wye). The winners were revealed at the Reading Beer and Cider Festival, home of the National Cider and Perry Championships.

Mayfayre's Cider impressed judges for being well-balanced and more-ish, boasting distinct spicy and woody notes and a dry aftertaste. In contrast, Cleeve Orchard's Perry won the title for its floral and full-bodied flavour, which had a hint of smoke in the aftertaste.

The competition follows more than a year of local tasting panels and regional heats that culminated at the Reading Beer and Cider Festival (2-5 May). Festival-goers have the opportunity to sample the winning drinks along with 150 ciders and perrys, 550 beers, foreign beers, wines and mead.

Andrea Briers, Chair of CAMRA's National Cider and Perry Committee said: "Huge congratulations to both Cleeve Orchard and Mayfayre for their exemplary products. As we know, cider and perry flavours can vary significantly from year to year and harvest to harvest, so seeing such distinct quality is incredibly important.

"Mayfayre, which is based in Herefordshire, exemplifies the very essence of traditional cider right in the home of England's cider country. Cleeve Orchard also impressed judges with its West Country Perry. Owner Lewis Scott has worked with CAMRA to campaign for greater support for small producers, and is a great example of how a local producer of the area can gain national recognition with a quality product."



FINE ART REAL ALE BAR BILLIARDS LIVE MUSIC

THE GARDENERS REST

THE FINEST COMMUNITY OWNED PUB IN SHEFFIELD

MON - THURS: 3-11PM FRI-SAT: 12-12AM SUN: 12-11PM

- Up to eight real ales and a selection of ciders
- Draft continental lagers and fruit beers
- Conservatory and beer garden
- Function room available for hire
- Quiz night every Sunday
- Live music and events

THE GARDENERS REST
105 NEEPSEND LANE | SHEFFIELD | S3 8AT
0114 272 4978 | WWW.THEGARDENERSREST.COM




PUB OF THE YEAR 2018

 /gardenerscomsoc

 @GardenersComSoc



Sheffield Beer Census Results

On Saturday 30 March, members of the Sheffield & District branch headed all around the city and its surroundings to complete the Annual Beer Census (rescheduled from last September). The purpose of the event was to take a snapshot of the range and cost of real ales and real ciders available in Sheffield on a given day.

It was a great excuse to visit a large number of pubs including many you do not normally go to, with the added bonus of it being a lovely bright sunny day.

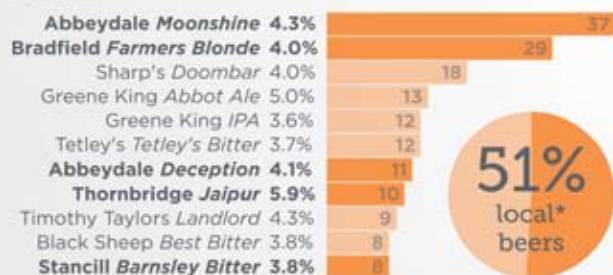
Each group set out at mid-day surveying around 20 pubs before heading to the Red Deer in the city centre. From here, those that could still make it, headed out to other areas and pubs which had not yet been surveyed. We visited slightly fewer pubs than we hope to but still a very respectable number and certainly enough to maintain our claim that Sheffield is the Beer Capital of the UK.



Breweries



Beers

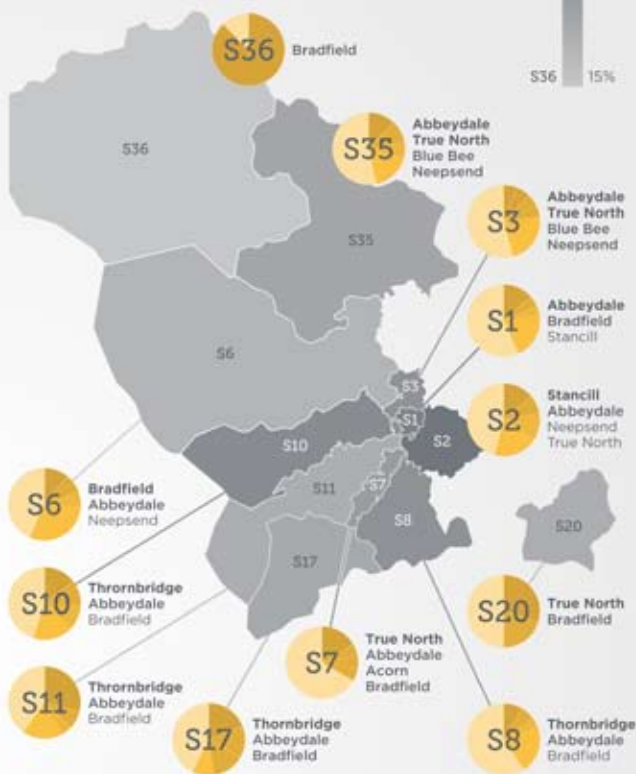


Real Cider



◆ compared to last census in Sep 2017

Areas



154 pubs were visited on the day, offering between them 709 real ales. This equates to 4.6 real ales per pub (higher than 2017's figure of 4.3) and a number yet again far higher than Manchester in its last survey. Real cider was available in 19 of the pubs surveyed, with a choice of 28 different ciders from 17 producers.

In total there were 407 unique real ales from 189 different breweries, which is a record for the number of breweries in a survey.

The average cost of a pint of real ale was £3.23, an increase of 11p (or 3.6%) from the June 2017 survey. With no increase in beer duty during this period (21 months) this is pretty much in line with inflation. Beers ranged in price from £1.89 to £4.80. The average price of a pint of real cider was down 22p from the last survey at £3.58 per pint.

Price



ABV



Local breweries dominated the pumps with Abbeydale (69), Thornbridge (49) and Bradfield (44) the top three most widely available breweries in Sheffield pubs.

Abbeydale's *Moonshine* took the top spot, available in 37 (around 1 in 4) of the pubs surveyed. Of the top 11 most popular beers, 5 were from local breweries.



Patrick



Let us know...

...if you'd like to help out with the next census and keep an eye on *Beer Matters* for details.

A big thanks to everyone who took part and special thanks to Patrick Johnson who single-handedly surveyed 38 pubs!



Railway Hotel

Bramall Lane

As the football season comes to a close, Railway Hotel becomes the out and out craft and real ale pub that so many CAMRA members past, present (and hopefully future) have come to enjoy. While our focus remains on tapping a fantastic mix of reliable local brews, we are also looking into sourcing some of the more sought after and exciting specials and collabs from the pinnacle of the craft scene. Something to satisfy top to bottom tastes.

To that note, we have an upcoming tasting evening featuring beer procured from three regional Belgian breweries: 3 Fonteinen, Oud Beersel and Hanssens Artisanaal. The various gueuze and krik beers will be paired with topical breads, cheeses, jams and mustards. This is sure to be an incredible evening, and tickets are extremely limited; details of

which can be found on our Facebook Page. Search: Railway Hotel Bramall Lane.

If you're still looking for a reason to drop by the pub, then let it be our cosy beer garden that owner, Andy, built by hand last summer. As the weather continues to improve, the beer garden continues to be our favourite spot for a cold beer.

Our Tuesday night themed quizzes continue to grow, we expect that to continue right through the Summer. As ever, keep your eyes peeled to the events section of our Facebook page for when your Mastermind subject of choice comes up.

All of us at Railway Hotel wish all of you readers a wonderful summer, and long may the Sheffield ale scene boom. Prost.

Dayve Traynor

Inn Brief

CAMRA award winning licensee Karen Lang-Norris is now at the **Ranmoor Inn**, Fulwood Road. The Ranmoor has a delightful enclosed stable yard for smokers and a glorious patio with seating out the front. There is a general knowledge on Thursday at 9.30pm. Seven beers are usually on the bar, Abbeydale Deception, Bradfield Farmers Ale and Blonde, Taylor Boltmaker and Landlord, Tetley Bitter and an ever changing guest beer. Local pork pies are available. The frequent 120 bus will get you there.

The new manager of the **Shiny Sheff**, Paul, is hoping to bring back life into this Marston's pub at Lodge Moor. There is a games area with dart board and pool table and the split level lounge has conservatory leading onto the decking with views over the golf course towards Stannington. Thursday is karaoke night with live music on Saturday and a midweek quiz night is planned. There are food offers every night and drinks offers throughout the week. On a recent visit there were Hob Goblin *Gold*, Jennings *Cumberland* and Vantage 82. The beer range changes with the wide choice from Marston's. The 51 bus serves the pub.

Real Ale, Real Food & Real Fires

The Old Hall Hotel

A Traditional 16th Century Coaching Inn
Market Place, Hope, Hope Valley, Derbyshire S33 6RH

f /TheOldHallHotel

t @oldhallhope



Homemade Food Served All Day | 6 Cask Marque Ales
Outstanding B&B | Roaring Open Fires
Muddy Boots & Dogs Welcome | Friendly Atmosphere



www.oldhallhotelhope.com

01433 620160

info@oldhallhotelhope.com

A Pub Done Different

THE PEAK HOTEL

The Peak Districts' Eccentric Alehouse
How Lane, Castleton, Hope Valley, Derbyshire S33 8WJ

f /ThePeakHotelCastleton

Find us on TripAdvisor

t @peakcastleton



Homemade Food Served All Day | Outstanding B&B
5 Cask Marque Ales & Large Selection of Craft Bottles
Muddy Boots & Dogs Welcome | Roaring Open Fires



www.thepeakhotel.co.uk

01433 620247

info@thepeakhotel.co.uk



Joiners Arms

New micropub opens in Bakewell

The Joiners Arms micropub opened in Bakewell on Friday 2 May and features 6 cask ales on handpumps plus a further selection of craft beers on keg taps. A loyalty card is available to buy that offers discounts on pints of beer.

Breweries featured on the handpump on the opening day included Buxton, North Riding, Abbeydale, Torrside, Hawkshead and Thornbridge.

The pub is located on North Church Street by the roundabout, conveniently close to the bus stop where the 218 to Sheffield departs from!



Inn Brief

The **Bloomery** at Broomhill have removed their hand-pumps and no longer sells real ale, although some craft beers still feature on the keg taps.

The **Castle Inn** at Bradway has been shortlisted for an Ei-Group (formerly Enter-prise Inns, the national pub owning company the pub is leased from) award for best food offer. It has already won the divisional award and this puts the pub, lead by chefs Jack Baker and Jack Windsor, in the top 9 to be judged in the national final, which is due to be announced at a gala award ceremony in July. As well as good food, the pub offers up to 3 real ales.

The Cross Keys at Hands-worth has been refurbished and reopened as the **Chantry Inn**, under the management of Chantry Brewery of Rotherham.

The **Punchbowl** at Crookes has joined the fold of True North Brewery and is to undergo refurbishment before reopening.

Meltdown Sheffield, an e-sports gaming bar, opened on the 11th May in the premises on Snig Hill previously known as Under the Boardwalk (and various other incarnations before that, it was once a tap for Samuel Smiths Brewery when the venue upstairs was the Black Swan).



Traditional Pub & Dining Room
Showcasing 13 cask ales, craft kegs,
locally curated wines & spirits and a locally
sourced menu featuring modern twists
on classic British dishes

- Children welcome until 7pm -
- Dogs very welcome in the bar area -



Bar Open
Sun - Thurs 12-11pm
Fri - Sat 12-11:30pm

Food Served
12 - 9pm
Monday - Sunday



risingsunshf



facebook.com/RisingSun.471.FulwoodRoad



Risingsunshf

471 Fulwood Road, Sheffield, S10 3QA • 0114 230 3855 • info@risingsunsheffield.co.uk



DEVONSHIRE CAT

DEVONSHIRE CAT

Open until 2am every day

Biggest draught beer range in Sheffield
20 Keg Lines - 12 Handpulls - 200 Bottled Beers
Dedicated Gluten Free Cask Line
Boutique Wines - Innovative Cocktails
Locally Sourced, Freshly Prepared Menu



10% cask discount for CAMRA members

Join us between 4-9pm Mon-Fri for
25% off all bottled beers
A large wine for the price of a small
£2 off cocktails



Regular Events

See our website for more
details



Open Daily 12pm-2am

Food Served
Monday - Saturday 12-9pm
Sunday 12-8pm



devonshirecat



facebook.com/devcat



thedevonshirecat

Find us at 49 Wellington Street, S1 4HG • 0114) 279 6700 • info@devonshirecat.co.uk



Crow Inn Scotland Street

Keep an eye out on Scotland Street over the next few weeks for the reincarnation of one of Sheffield's long lost historic watering holes. After over ten years as the budget Sleep Hotel, the much missed Old Crown Inn/R&B's/Crown has been given a new lease of life as the Crow Inn.

Purchased last year by Wendy Woodhouse, known to many from her time as landlady at the Harlequin, and run by Kate Major & Chris Bamford who are also at the helm at the Rutland Arms, an extensive refurbishment has been carried out to restore the bar area and transform the hotel accommodation.

The comfortable two roomed bar features an eclectic range of beer across five hand pulls and 14 keg lines, from classic German lager and wheat beer, our house cask bitter and pale ale from Abbeydale Brewery, to an ever changing selection of the latest hazy IPA, American Stouts of massive proportions and cask beers from around the country.

A wide selection of quality wine, gin, rum and whisky (the pub is on Scotland Street, after all) will be available too. Our friendly and knowledgeable management team, Adam and Lizzie, provide a warm welcome.

The hotel features seven en suite guest rooms, furnished to a high standard, with prices ranging from £45-£60 a night.

If you have any questions, or are interested in booking a room, drop us an email at thecrowinn@gmail.com – or when we are open, pop in and see us!

And lastly... why the Crow Inn? Once it's up, have a look at our pub sign and there's a clue!

Chris Bamford



Birdhouse Tea Bar & Kitchen

Sidney Street

OK, I admit a tea room is not somewhere you would expect to be reading about in *Beer Matters*. However Birdhouse is a local Sheffield tea company with a fairly modern outlook. Their tea bar, on Sidney Street in Sheffield City Centre opens all day with an extensive range of teas and blends, brunch and cakes whilst in the evening the mood changes and table service is offered with a menu of high quality tapas style small plates.

Their new evening chef is turning out dishes with a whole variety of inspirations including Pork Bao Buns served with anchovies and Thai salad, Lentil curry on kale, Goats cheese arancini, Asparagus with poached egg, hollandaise & truffle oil, Crispy tofu with teriyaki and

avocado, cured salmon gravalax with cured beetroot. Meat eaters, vegans and those on a gluten free diet are all catered for well!

Meanwhile to drink there is more than just tea, a range of craft beer is available in cans for diners to accompany their meal, including their own collaboration with Abbeydale Brewery - *Birdhouse*, a beer brewed with green tea, jasmine and hibiscus.

Also available from Abbeydale is *Heathen* pale ale, which is now gluten free. At the time of writing assistant Manager Elli was planning on updating the beer selection and it is fantastic to see effort being made to serve good beer that compliments the food.

Inn Brief

Triplepoint Brewery & Bar on Shoreham Street is running an after work social type event every Friday from 6:30pm, usually involving live music and pizza as well of course as a range of beers brewed on site.

The **Northern Monkey** micropub is due to open soon at 8 Middlewood Road, Hillsborough. It is being opened by the same people as the Brass Monkey further up the same road.

The usual Saturday tap session at **Drone Valley Brewery** on Saturday 25th May sees the added interest of the brewery yard being the finish line for a charity duck race on the river Drone. The event runs from midday until 4pm, the location of the start line hadn't been confirmed at the time of writing.

A planning application has been submitted to convert a shop unit into a micro-pub on Mosborough High Street.

The **Little Haven Ale House** micropub at Parkgate, Rotherham, is celebrating its first birthday on Saturday 1st June from 7pm with a buffet, raffle and prizes as well as the usual attractions such as real ale! This friendly little bar is 5 minutes walk from



Abbeydale

We really are hurtling through 2019 at an alarming rate! Luckily we have plenty of delicious beers coming out this month to help you ease into summer.

Our Reaper series has been lying low for a while, but now it's back! This time we're releasing a Grapefruit Wheat Beer (4.8%) with the zesty fruitiness of Citra and Centennial hops backed up by the addition of plenty of real grapefruit.

Also joining our Brewers Emporium range we have two new **Unbeliever** sours, both fruity little numbers... one with Mango & Lychee (4.6%), and the other a

Raspberry & Vanilla Berliner (3.8%). Try saying that fast after you've quaffed a couple! Finally a Citra & Sabro hopped **Serenity** Session IPA (3.8%), which promises tropical notes of coconut and pineapple.

Our cask only pale ale specials are looking good too, with Cascade hopped **Belfry** (4.5% and always a favourite!), **Wilderness** (3.7%) brewed with Pacific Jade and Enigma and **Resolution** (4.2%) all making appearances throughout June. So keep your eyes peeled for them hitting bars around town soon!

Laura

Brewery Bits



Triple Point's **Nekter** was named Champion Beer at the recent Barrow Hill Rail Ale Festival following a blind tasting to judge the beers on the opening day.

Nekter is a twist on a pilsener lager recipe, brewed with fruity US hops and available as a cask conditioned ale.

Stancill are holding another party in their brewery on Friday 31st May from 7pm. "Summer Breeze" will feature their range of real ales and lager, street food and live music.

The brewery is located on Oakham Drive, within the Parkwood Industrial Estate, which is off Rutland Road.

The nearest bus is route 7/8 on Neepsend Lane, get off the bus outside the Gardeners Rest/Cutlery Works and walk up the hill past the Forest pub and turn left.

Abbeydale

BREWERY

— est.1996. Sheffield —

ONLINE SHOP

ABBEYDALEBREWERY.CO.UK/SHOP

OUR FULL RANGE OF CANS

PLUS BADGES, BEANIE HATS, POSTERS AND MORE

HEAD OVER TO OUR ONLINE SHOP TO KIT YOURSELF HEAD TO TOE IN ABBEYDALE GEAR!



WWW.ABBEYDALEBREWERY.CO.UK / 0114 281 2712



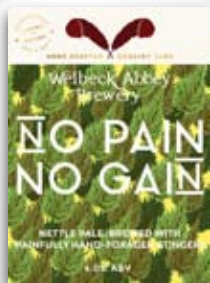
/ABBEYDALEBREWERY



/ABBEYDALEBEERS



/ABBEYDALEBEERS



Welbeck Abbey

Happy June! Summer is on the way and we've brewed some delicious specials this month to help get you feeling those summer vibes.

We're starting June with **Duck Decoy**, a popular 4.6% hoppy USA pale. This beer is filled with the mouth-wateringly fresh aromas of pear, orange and passion fruit, however at a low strength it's a pleasantly light indulgence.

Next on the table we've got **Sleeping Beauty**. This 5.3% honey-sweet IPA is made with enchanting English 'Beata' hops. These flowers impart subtle notes of honey, apricots and almonds.

And finally, from our stellar new Foraged & Found range we've got **No Pain No Gain**.

For hundreds of years nettles were included as a main ingredient in British beers, so our team has painstakingly hand-foraged this seasons fresh nettles to produce an easy drinking spring time pale ale at a lovely 4.0%.

We're also excited to announce that we are now releasing the next instalment of our Foraged & Found range at the end of this month. We have another 6 amazing and unique sustainable brews coming your way which includes our ever popular **Cocoa Noel** (we know we know, how can we even think about Christmas yet!). Check out our social media channels for updates on what's brewing! Now, roll on summer!

Jessica

Fuggle Bunny

Just a little note to let you know that we are very busy at Fuggle Bunny Brewery making our award winning ales, we are open every Friday to the public for you to come and enjoy a fuggle or two with free snacks a game of pool, or darts or a good old fashioned chin wag.

Our CAMRA award winning Pub Fuggles Chapter ONE in Worksop is open Thursday from 4.00 - 11.00pm, Fri 12 - 11.00pm, Sat 12 - 11.00pm and Sunday 12 - 11.00pm. On Thursday we have the amazing Sherwood Fired Pizza van who park up in our car park and serve amazing fresh stone baked woodfired pizzas delivered to your seat, inside, whilst enjoying a range of fuggles finest, along with specialised gins and premium lagers.

Our own craft ale keg beer is served at both the brewery and the pub and is a gorgeous refreshing 4.0 pale ale bursting with lemon and elderflower called **Latest Squeeze**.

Wendy Steeples

The Brewery can be found at Meadowpark Industrial Estate at Halfway, a short walk from Halfway tram terminus or on bus routes 70/71. Fuggle Chapter One pub is on Park Street in Worksop, a 16 minute walk from the railway station or 8 minute walk from the bus station.



BLUES & ALE STAGE

FRIDAY 19 & SATURDAY 20 JULY 2019

ANOTHER WALTZ IN THE COURTYARD

FREE ENTRY
FRIDAY 19 JULY

Do\$ch - 9pm

Slim Wilson & The Swamp Brothers
- 7.00pm

SATURDAY 20 JULY

The Chris Wragg
Blues Band - 10 pm

32-20's - 8.00pm

the 88s - 6.00pm

The Bearcats - 4.00pm

Andy P Davison - 2pm

REAL ALE, CIDER, WINES & FOOD AVAILABLE

7 SMITHFIELD, SHALESMOOR, SHEFFIELD S3 7AR, UK
0114 3489421

Your pub needs your vote!

Our Pub of the Month award is a bit of positive campaigning, highlighting local pubs that consistently serve well kept real ale in friendly and comfortable surroundings.

Voting is your opportunity to support good, real ale pubs you feel deserve some recognition and publicity.

All CAMRA branch members are welcome to vote at branch meetings or on our website.

It's not one pub against another, simply vote YES or NO as to whether you think the pub should be PotM. If

we get enough votes in time we will make the award. Nomination forms are available at branch meetings and on the website. The pub must have been open and serving real ale for a year and under the same management for 6 months.

Winners compete alongside our *Good Beer Guide* entries for branch Pub of the Year, the winner of which is entered into the national competition.

The list of nominees is below and includes which buses to take if you fancy a trip to try them out.

Pub of the Month nominees

Ale House

Millhouses (bus 86)

Broomhill Tavern

Broomhill (buses 10, 10a, 120)

Commercial

Chapelton (bus 2 or train)

Crown Inn

Heeley (buses 10, 10a, 20, 24, 25, 43, 44, X17)

Doctors Orders

Broomhall (buses 6, 120, 181, 271, 779, 781, 952)

Hillsborough Hotel

Hillsborough (buses 35, 57, 81, 82, 135, 135a)

Walkley Beer Co.

Walkley (buses 31, 95)

Vote
online
now!

sheffield.camra.org.uk/potm



Dog & Partridge
Trippet Lane

Pub of the Month
June 2019

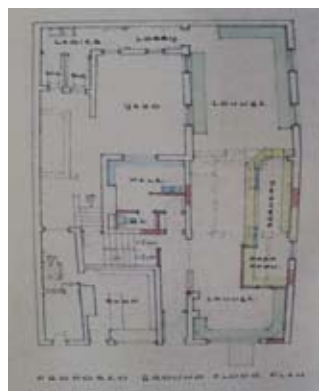
Congratulations to the Dog and Partridge for becoming a worthy winner of the Sheffield and District CAMRA Pub of The Month. This award is designed to highlight pubs serving good real ale in friendly and comfortable surroundings. The Dog scores on all points, with beer quality always high. To enjoy the celebrations, join us on Tuesday 11th June from 20:00 (presentation at 21:00).

Dating back to 1796, The Dog and Partridge is a cosy multi-room dog-friendly pub in Sheffield city centre. Many activities take place onsite. These include folk events, games nights and a weekly quiz: 6.00 p.m. every Tuesday. Since early 2013, the Dog and Partridge has been led by Landlord, Conor Smith.

Conor, and his team, utilise four hand-pumps to provide an ever-changing range of quality beers, mostly from

local breweries: a regular Bitter (usually Stancil) and Stout (often Chantry), one pump dedicated to specials from Abbeydale with the fourth pump providing a wide range of guests. Recently these have included Ashover, Bad Seed, Blue Bee, Great Newsome and Magic Rock. They also serve 'the best Guinness outside Dublin.' A 10% discount is available for card-carrying CAMRA members.

Previously Pub of the Month in March 2014, the Dog and Partridge is on the CAMRA Regional Inventory of Historic Pub Interiors: for pubs that are of 'some regional importance' (SRI), meaning that specific features are of sufficient quality for the pub to be considered noteworthy.



Although the interior of four rooms has been opened-out and modernised, the original layout is still visible; there is some inter-war tiling on the right-hand side of the corridor into the pub and one nearly intact room. The cen-

tral snug has been spared from excessive change. Cosy and genuinely historic, this little room retains its old fireplace, original door and fixed seating, with a wide panel above still having bell pushes from the days of table service. The fireplace is also very old but has a modern hearth. Graffiti, of various ages, is carved into the woodwork.

1974 plans proposed that this snug become a male toilet and the servery re-configured. Luckily, these alterations did not materialise. Further alterations in 1989 saw the pub extend into a

neighbouring shop, creating the snug to the left of the entrance. The three-storey stone building also has good 'DOG & PARTRIDGE GILMOURS WINDSOR ALES & STOUTS' raised lettering on the fascia and an interesting sign above the entrance.

The pub opens at 12 noon daily, closing at 11pm, Monday – Thursday, 11:30 Friday and Saturday and 10pm on Sunday. Home-made food is available Tuesday – Saturday, lunchtimes and early evening (12-2 and 5-9).

Dave Pickersgill



Pub of the Month Presentation May 2019

A number of CAMRA members and regulars gathered at the Ale Club on Ecclesall Road on the evening of Tuesday 14th May to celebrate this fantastic little bar being voted Pub of the Month with our branch chairman presenting the winners certificate and us all enjoying some great beer and hospitality.

Pictured receiving the award from Glyn Mansell: Annabelle Mould and James Eardley.

EYRE ARMS



Britain's Best Real Heritage Pubs Eyre Arms, Hassop

The Old Eyre Arms (Hassop) recently joined the CAMRA top category of Heritage Pubs: National Inventory (NI) for their unspoilt early 1950's makeover.



There are about 270 pubs in the UK in this category; only 3 in Sheffield. Our Pub Heritage Officer, Dave Pickersgill is shown presenting Lee and Sian with the certificate.

THE CHURCH HOUSE

LEGENDS OF ROCK

YOUR LOCAL IN THE HEART OF THE CITY

- Live Music Every Friday And Saturday
- Venue Hire For All Occasions
- Rehearsal Space And Recording Studio Hire Available
- Fresh Food Daily
- Extensive Range Of Premium Gins, Whiskies And Rums

Phone - 0114 453 7714

Email - info@churchhousesheffield.co.uk

Website - www.thechurchhousesheffield.co.uk



Opening Hours

Tuesday - Thursday Midday - 12am
Friday - Saturday Midday - 2am



WHEN IT COMES TO FINE ALES ...



... you'll find us
outstanding in our field



TRY A TASTE of TRADITION

On-Site Brewery Shop open: Monday to Friday
8am - 4pm & Saturdays 10am-4pm.

info@bradfieldbrewery.com • 0114 2851118

www.bradfieldbrewery.com

Bradfield Brewery Limited. Watt House Farm,
High Bradfield, Sheffield, S6 6LG



Visit our page on Facebook or follow us
on Twitter for the latest news and offers.



The Põhjala brewery and tap room

Hopping around Estonia

It only seems like yesterday that I wrote my letter stepping down as editor of *Beer Matters* but here I am having spent the last few weeks in Estonia with Poppy, making a great start to our journey through Europe. In Estonia we have discovered a country with a burgeoning craft beer scene, from macro-breweries trying their hand at more niche beers to the new kids on the block creating some really interesting experimental styles.

We flew into Riga in Latvia (the flights were much more reasonable than going directly to Estonia) and spent a couple of days there acclimatising to the more relaxed travelling way of life before getting the coach up to Pärnu in Estonia. A beach resort known as Estonia's "summer capital", Pärnu was quiet in late April but its streets are lined with restaurants, cafes and bars. Most of these served the big Estonian

brand-name lagers such as A. Le Coq and Saku, but some had a selection of Belgian beers in bottles too.

The main attraction for beer lovers in the town was undoubtedly a little bottle shop called **Õllepoed Nr.2 Gambrinus**, which looks unassuming from the outside but within stocked well over 300 Estonian beers as well as a (yes, one) table where you could sit and sample them. We left the shop with a few breweries to look out for on the rest of our trip: I was really impressed with Pühaste who had a good range of all styles, while Poppy was a big fan of Sori Brewing and their milkshake DIPAs.

Having made a full recovery, we headed off to the ferry to spend a few days exploring Saaremaa, Estonia's largest island (about the size of Luxembourg apparently). We stayed in the island's main town, Kuressaare, which al-

legedly has a population of 14,000 – they must have been hiding while we were there as the place was deserted! We had hoped to spend one of our days on the island visiting a local brewery, Pihtla, who specialise in a beer style called taluõlu (Estonian for "farmstead beer"), not dissimilar from the Belgian saison.

Sampling some local beers in my trusty Beer Central glass



Unfortunately, we discovered the brewery only opens to visitors during the summer months so we couldn't go, but luckily we found a place just around the corner from our apartment called **Saaremaa Veski** that sold their beers. I tried their *Pihltla Õlu* (7.6%) and was pretty impressed. It had the yeasty flavour you might expect from a farmhouse-style ale but apparently the beer is bittered using juniper rather than hops, which gives it an interesting twist. It was also very obviously unfiltered and unfined – I think back home they would call this a real ale!

We tried out a couple more of the bars in Kuressaare, but actually the place with the largest selection of local craft beer was the Coop supermarket – they had Pihltla and another Saaremaa brewery, Põide, as well as beers from the neighbouring islands of Muhu and Vormsi. I can't say any of them were particularly

outstanding, but it was great for ticking off some new breweries.

Next up was Estonia's capital city, Tallinn. We arrived here knowing exactly what we were looking for on the beer front having done our research online, so the first port of call was the tourist information office. Poppy, always a fan of a free city map, picked one up and we marked on the best-rated beer bars so we could work out how to fit them in with our sightseeing. After visiting them all, our favourite was an underground bar called **Põrgu**, which translates into English as "Hell"! Despite the name, it was a really comfortable and friendly place with a huge range of beers and some excellent food too. Our beer highlights were again from Sori Brewing and Pühaste, but we also sampled beers from the likes of Lehe, Põhjala and Kolk during our three visits.

No beer trip to Tallinn would be complete without a visit to the **Põhjala Tap Room**, so one Saturday afternoon we headed to the trendy Kalamaja district where the brewery is located to try it out. We were already aware of Põhjala having seen their bottles around Sheffield, but there's nothing quite like trying beer at its source. We were very impressed by the tap room, a large modern bar with a vibrant atmosphere and 20-odd beer fonts, 80% of them serving the brewery's own beers. The tasting flights were pretty reasonably priced

too, giving us chance to try as many as possible.

The final destination on our Estonian beer tour was Tartu, a university city in the south of the country. It seemed common sense that where there were students there would be beer, and so it proved! The city is home to the country's largest beer manufacturer, A. Le Coq, which offered an enjoyable brewery tour for €10 per person, although the tasting at the end was limited to one beer each, which seemed a little stingy. Tartu is also the location of Pühaste brewery, and while the brewery itself only opens for special events, their flagship bar in the city centre is open all year round and was well worth a visit. Our highlight though had to be the deTolly Õllebaar, hidden downstairs under a building that looked like a public toilet but was actually a cafe. The bar itself was small but stocked a good range of beers, all presided over by a friendly (and very tall) owner.

As I write this we're about to head into Latvia to see what we can find there. If you'd like to keep up to date with our adventures you can go to our blog, hoppingaround.co.uk – thanks to everyone who's already been reading! As well as beer, Poppy's also been writing up some of the other interesting places we've been and she's been keeping a daily photo gallery, so there's something for everyone.

Dominic Nelson





A Grand Good Friday Day Out

Today's day out again made use of the Derbyshire Way-farer ticket.

A leisurely train ride to Derby, bus into the bus station and then the Trent Barton 6.2 service deposited me in Belper in time for the 11am opening of the **George & Dragon** on the main road through Belper for their St. Georges Beer Festival. Seven hand pumps were on the bar but only 3 were in use today as another 20 had been separately stillaged for the weekend. This is a well-positioned friendly road side ale house with a garden out back, parking and letting rooms. From the list I had halves from Falstaff, Froth Blowers, Rufford Abbey and Leatherbritches.

From Belper it was another Trent Barton 6.2 to Ripley and then the 1A to Waingroves for the festival at the **Thorn Tree** on Church Street. Although

the pub is advertised as not opening until 4pm in the week I was optimistic that common sense would have prevailed during their Easter Bank Holiday Beer Festival as it had plenty of beer to sell, but alas, it had not. The pub was shut and the sign at the side said "Beer Festival open at 4pm". This in my view was very short-sighted given that it was Easter Weekend and the weather was set fair. Anyway, I was now ahead of schedule and a short(ish) walk took me to a bus stop to catch the Rainbow One Service towards Langley Mill rail station. I had about 15 minutes before my train to Chesterfield.

Walking into the centre then catching the 82 service to Sutton cum Duckmanton took about 30 mins and I arrived at the **Arkwright Arms** (*CAMRA Good Beer Guide 2019* listed), which

had also opened at 11am (as normal) for their Easter Beer Festival. This large imposing pub stands at a crossroads and offers plenty of outdoor seating, a play area, food and parking as well as a vast array of handpulled ale and traditional cider. Sampled here were beers from Ashover, Great Heck and a couple from Intrepid. Back on the bus in to Chesterfield and a walk through the marketplace to catch the Stagecoach service 90 to Brampton.

The 9th St. George's Festival at the **Rose & Crown** (*GBG 2019* entry) was very busy with a full garden in front. The main bar selection was supplemented by a separate stillage. From the festival list I sampled beers from Nomadic, Bad Seed and Neepsend before another Service 90 took me back into Chesterfield for the short walk to the **Chesterfield Arms** for their North v South Beer Festival. The numerous beers on the main bars were enhanced by a further selection in the rear festival bar. Beers from Bristol Beer Factory, London Beer Lab, Pig & Porter, Pentrich and another from Bad Seed were enjoyed. I decided against any further imbibing in Chesterfield and instead had a pleasant Thwaites *Nutty Black* back in the **Old Queens Head** in Sheffield Interchange. It was good to see a number of pubs having festivals over the weekend. It's just a shame that I couldn't have visited all 5!

Andy Morton

HAND CRAFTED ENGLISH ALES
Welbeck Abbey Brewery

INTRODUCING THE NEXT INSTALLMENT OF OUR INNOVATIVE NEW RANGE

FORAGED & F₀UND

CENTERED AROUND SUSTAINABLE PRODUCTION AND OUR COMMITMENT TO REDUCING UNNECESSARY WASTE. FIND OUT MORE AT WWW.WELBECKABBEYBREWERY.CO.UK.

Tom, Brigitte and the team welcome you to...

THE HILLSBOROUGH HOTEL

54-58 Langsett Road, Sheffield S6 2UB 0114 232 2100 [f](#) [t](#)

6 REAL ALES
locally and nationally sourced

TUE-SUN
home-cooked
locally sourced

FOOD

TUE PIE NIGHT
THU STEAK NIGHT

QUIZZES

EVERY
TUESDAY

JIM'S
GENERAL
KNOWLEDGE
QUIZ

THU
6 JUN

MUSIC
QUIZ

FOLK MUSIC

1st, 2nd and 3rd
SUNDAYS
of the month

[f](#)

All details can be found
on our Facebook page

Festival guide

June

Doncaster

Thu 6 – Sat 8 Jun

Doncaster CAMRA host their annual festival at the Dome (DN4 7ND). Open 5-11 Thursday, 11-11 Friday and Saturday.

Leeds

Thu 6 – Sat 8 Jun

Leeds CAMRA festival held at Leeds Beckett University Students' Union (LS1 3HE), 15 minutes' walk from Leeds railway station. Over 100 real ales, plus cider and perry, hot and cold food and live music. Open 11-11 every day; free entry for CAMRA members all day on Thursday, £2 on Friday and Saturday.

Peddler Night Market

Fri 7 – Sat 8 Jun

Held in an old industrial warehouse in the Kelham Island/Neepsend district at 92 Burton Road, this monthly event features cask beer from a local brewer, craft keg beer from a guest brewer, cocktails, street food traders, makers stalls and music. Free entry. Open 5pm-11pm Friday and 2pm-11pm Saturday. Buses 7/8 run past the venue or Shalesmoor tram stop is a short walk away. On the Saturday there are also normally tap room sessions nearby at Sheffield Brewery and Neepsend Brewery.

Derbyshire Beer & Bus Running Day

Sat 15 Jun

A brand new event centred on Peak Rail's Rowsley

South station with a fleet of heritage buses, preserved and driven by volunteer enthusiasts, linking a load of Peak District pubs around Bakewell, Matlock and the countryside inbetween. To get there from Sheffield we suggest either bus X17 to Matlock or bus 218 to Bakewell to make the connection.

Loxley

Fri 21 – Sun 23 Jun

The Wisewood Inn hosts extra beers in a marquee out back whilst food is available in the pub. The Wisewood Inn is also home to Loxley Brewery. Bus 31 stops right outside.

Cow Shed

Fri 21 – Sat 22 Jun

The now annual Cow Shed beer festival takes place at Bakewell's agricultural business centre, just across the river from the main bus stops (route 218 from Sheffield) in the centre of town featuring around 40 local ales plus cider, food and music. Advance tickets cost £6 (more on door) and include entry, glass, tasting notes and first half pint.

Pleasley Pit

Sat 22 Jun

The annual beer festival held at Pleasley Pit Country Park near Mansfield, open from 2pm to 11pm. Bus 53/53a from Sheffield to Mansfield stops nearby.

Outcrop

Fri 28 – Sat 29 Jun

A small craft beer festival featuring up to 40 limited

release, small batch and collaboration beers from guest brewers at Heist bar & brewery in Clowne. Food and music also features. Advance tickets advisable. Bus 53/53a goes there from Sheffield.

Wortley Men's Club

Fri 28 – Sun 30 Jun

Held in association with Barnsley Hospice, the annual beer festival at Wortley Men's Club returns for 2019.

July

Peddler Night Market

Fri 5 – Sat 6 Jul

Held in an old industrial warehouse in the Kelham Island/Neepsend district at 92 Burton Road, this monthly event features cask beer from a local brewer, craft keg beer from a guest brewer, cocktails, street food traders, makers stalls and music. Free entry. Open 5pm-11pm Friday and 2pm-11pm Saturday. Buses 7/8 run past the venue or Shalesmoor tram stop is a short walk away. On the Saturday there are also normally tap room sessions nearby at Sheffield Brewery and Neepsend Brewery.

Hawaiin Shirt Day

Sat 6 Jul

The annual party at the Arkwright Arms at Sutton-cum-Duckmanton near Chesterfield (regular "Castle Line" Stagecoach buses there from Chesterfield town centre) involving a big outside bar packed with ales, food, live music and loud clothes.

Sunfest

Thu 11 – Sun 14 Jul

The annual beer festival at Abbeydale Brewery's Rising Sun pub in Nether Green, near Fulwood. Features around 100 beers on cask and keg plus cider, food, music, charity fundraising and more.

Blues & Ale Stage

Fri 19 – Sat 20 Jul

Saxbob's annual blues and beer celebration returns to the courtyard at 7 Smithfield, S3 7AR. Free entry both days, live music from 7pm 'til late on Friday and 2pm 'til late on Saturday. This is just a short walk from Gibraltar Street/Kelham Island pubs and the local bus services or Shalesmoor tram stop is 5 minutes walk away.

August

Great British Beer Festival

Tue 6 – Sat 10 Aug

CAMRA's flagship national beer festival returns to the Olympia in London and this year promises more ales than ever before. Ticket and volunteering information should be released in the coming weeks.

Hope Valley

Fri 23 – Mon 26 Aug

The regular bank holiday weekend beer & cider festival at the Old Hall Hotel in Hope featuring lots of real ales and ciders in a tent outside the hotel plus food and music. Buses 271/272/273/274 from Sheffield run past the venue or Hope railway station is 10 minutes walk away.

September

Funk Fest

Sat 7 – Sun 8 Sep

Following the success of the inaugural event last year, Funk Fest is back at Abbeydale Brewery exclusively showcasing mixed fermentation and sour beers.

Cleethorpes Rail Ale & Blues

Fri 13 – Sun 15 Sep

The annual blues music festival at Cleethorpes Light Railway's Lakeside station also featuring real ale and little steam trains.

Grenoside

Sat 14 Sep

Grenoside Beer Festival is back at the Grenoside Community Centre for 2019. A day

of cask and keg beer, plus gins, wines and spirits and a selection of food from local vendors. Tickets available from Eventbrite.

York

Wed 18 – Sat 21 Sep

The annual beer and cider festival from York CAMRA, held as always at the Knavesmire racecourse. More details to be announced.

October

Steel City 45

Wed 16 – Sat 19 Oct

Sheffield & District CAMRA's annual beer and cider festival returns to the iconic Kelham Island Industrial Museum for another year. More details to be released nearer the time.



Quiz Answers Notable Women

Here are the answers to the quiz from a couple of issues ago, written by Duncan Froggatt in support of the work of Epilepsy Action.

1. Florence Nightingale
2. Elizabeth (Bess) Talbot
3. Georgiana Cavendish
4. Beatrix Potter
5. Amy Johnson
6. Anne Longden
7. Judi Dench
8. Deborah Cavendish
9. A S Byatt
10. Penelope Wilton
11. Pamela Liversidge
12. Dorothy Hodgkin
13. Helen Sharman
14. Ada King, Countess Lovelace
15. Hilary Mantel
16. Joanne Harris
17. Ellen MacArthur
18. Jessica Ennis-Hill
19. Millicent Fawcett
20. Rebecca Adlington



Epilepsy Action is the UK's largest epilepsy membership organisation, aiming to support the 600,000 people across the country with the condition, as well as educating the wider public and helping to break down the stigma that still exists about epilepsy.

In the Sheffield area, our local branch acts as a support group to people with epilepsy, their families and friends, as well as working at informing and educating the public about the condition. There are monthly meetings on Thursday evenings and Saturday mornings. You are welcome to attend if you wish.

Sheffield contacts: David 0114 2302151, Maureen 0114 2967892, Duncan 0114 2352197 or email info@epilepsy-sheffield.org.uk

Branch diary

Info and bookings:
social@sheffield.camra.org.uk

Branch meeting

8pm Tue 4 Jun

The usual monthly meeting where members get together to discuss branch business, share pub, club and brewery news and catch up on what is happening in the campaign. This month's venue is the Harlequin on Nursery Street and we will also be doing a tasting of Exit 33 beers. Buses 3/3a/7/8 stop outside.

Cider Pub of the Year

8pm Fri 7 Jun

The winner, as voted for by our members, is the New Barrack Tavern. Join us for the certificate presentation then stay for beer and live music. Bus 7/8/86 stops outside.

Pub of the Month

8pm Tue 11 Jun

The winner of our June Pub of the Month award, as voted for by local CAMRA members, is the Dog & Partridge on Trippet Lane. Join us for a pint or two as we be present their certificate. Nearest tram and bus stop is City Hall, on West Street.

Festival planning meeting

8pm Tue 18 Jun

Planning meeting for the 45th Steel City Beer and Cider Festival. Venue is the Gardeners Rest, Neepsend Lane (upstairs). Bus 7/8 stops outside, Shalesmoor tram stop is 10 minutes walk away.

Pub of the Year: Sheffield Winner

8pm Fri 21 Jun

The pub judged as overall winner was the Gardeners' Rest at Neepsend. Come along, see us present the award certificate then enjoy all what the pub has to offer on a Friday night! Bus 7/8 stops right outside or Shalesmoor tram stop is 10 minutes walk away.

Pub of the Year: South Sheffield area

8pm Thu 27 Jun

The winner, as voted for by our members, is the Sheaf View at Heeley. Join us for a beer as we present the certificate. Buses 20/24/25/43/44/X17 stop nearby on London Road.

RambAle #4

Sat 29 Jun

We leave the King and Miller (Deepcar) at 12:30 for a 3.5 mile walk to Wortley which will then be followed by time at the Beer Festival at the multiple award-winning Wortley Club.

Buses 57 and SL1 run to Deepcar from Sheffield/Middlewood. To return, either walk back to Deepcar to connect with the bus back to Middlewood (every 12 mins) or get the 16:38 or 18:44 TM Travel 29 bus from Wortley to Sheffield.

Branch meeting

8pm Tue 2 Jul

The usual monthly meeting where members get together to discuss branch business, share pub, club and brewery news and catch up on what



THORNBRIDGE
BREWERY

TAP TAKEOVER

THURSDAY 20TH-SUNDAY 23RD JUNE
PLUS A MEAL PAIRING
ON FRIDAY 21ST JUNE

SOLSTICE



CYCLE



SATURDAY 22ND JUNE

www.britishcycling.org.uk/events/details/201781/Solstice-Cycle



THE ANGLERS REST

MAIN ROAD, BAMFORD, DERBYSHIRE, S33 0DY

is happening in the campaign. This month's venue is the Greystones.

Pub of the Year:
West Sheffield area
8pm Thu 4 Jul

The winner, as voted for by our members, is the Itchy Pig Alehouse at Broomhill. Join us for a beer as we present the certificate. Bus 120 stops right outside.

Pub of the Year:
District (Derbyshire) area
Sat 6 Jul

The winner is the Three Stags Head at Wardlow Mires. We plan on arranging a minibus trip including this amongst a few Peak District pubs. Date and time TBC.

Pub of the Year:
City Centre area
8pm Tue 9 Jul

The winner is the Rutland Arms on Brown Street.

Pub of the Year:
Kelham Island area
8pm Thu 11 Jul

The winner is the Kelham Island Tavern

RambAle #5
Sat 27 Jul

Catch the 10:30 218 TM Travel bus as far as Baslow (11:10). We shall walk via Curbar and Bee Wood to the Chequers Inn, then along Froggatt Edge to the Grouse Inn, through the Longshaw Estate to Fox House for buses home.

Alternatively you can catch the 11:35 TM no 4 bus from the Sheffield Interchange to the Norfolk Arms at Ringinglow. We'll then walk over the Houndkirk Road to Fox House, through Longshaw and meet the other walkers at the Grouse.

RambAle #6
Sat 24 Aug

Meet at the Rawson Spring at Hillsborough for a breakfast at 11:00, or join us there in time to catch the 11:55 61 bus from Hillsborough interchange to High Bradfield. We shall walk from there down to Low Bradfield, around Dam Flask towards the Royal Hotel at Dungworth. From there up Stacey Bank to the Nags Head to wait for a bus back.

RambAle #7
Sat 28 Sep

Catch the 10:40 218 TM Travel Bus from the Sheffield Interchange (B4) to the terminus in Bakewell where we will transfer to the 11:51 178 bus to Monyash. From there we shall walk down to Sheldon then to Ashford in the Water. We shall call in at the Thornbridge Brewery on the walk back into Bakewell for the 218 bus home.

RambAle #8
Sat 26 Oct
Route TBC.

Committee

Glyn Mansell

Chair

chair@sheffield.camra.org.uk

Patrick Johnson

Vice Chair

vice@sheffield.camra.org.uk

Phil Ellett

Secretary

secretary@sheffield.camra.org.uk

Paul Crofts

Treasurer

Festival Organiser

treasurer@sheffield.camra.org.uk

Dave Pickersgill

Pub Heritage Officer

pubheritage@sheffield.camra.org.uk

Andy Cullen

Social Secretary

social@sheffield.camra.org.uk

Beer Matters Editor

beermatters@sheffield.camra.org.uk

Sarah Mills

Real Cider Champion

Alan Gibbons

Pub of the Year and Good Beer

Guide Coordinator

potm@sheffield.camra.org.uk

Andy Shaw

Membership Secretary

Beer Matters Distribution

Clubs Officer

Beer Quality Scoring Coordinator

membership@sheffield.camra.org.uk

Malcolm Dixon

RambAles Coordinator



CAMRA (National)

230 Hatfield Rd

St Albans

Herts AL1 4LW

www.camra.org.uk

01727 867201



Problem with your pint?

Contact Citizens' Advice Sheffield on 03444 113 111.

Join up, join in, join the campaign



From
as little as
£25*

a year. That's less
than a pint a
month!

Discover
why we joined.
[camra.org.uk/
members](http://camra.org.uk/members)



**Join us, and together we can protect the traditions of great
British pubs and everything that goes with them.**

Become part of the CAMRA community today – enjoy
discounted entry to beer festivals and exclusive member
offers. Learn about brewing and beer and join like-minded
people supporting our campaigns to save pubs, clubs,
your pint and more.

Join the campaign today at
www.camra.org.uk/joinup

*Price for paying by Direct Debit and correct at April 2017. Concessionary rates available.
Please visit camra.org.uk/membership-rates



**CAMPAIGN
FOR
REAL ALE**



THE WISEWOOD INN PRESENTS...

Loxley Beer Festival

June | Free
21-23 | Entry

REAL ALE | REAL CIDER | CRAFT BEER | LIVE MUSIC | BBQ

WWW.WISEWOODINN.CO.UK



THE WISEWOOD INN
539 LOXLEY ROAD
SHEFFIELD, S6 6RR

WISEWOOD.INN @
WISEWOOD_INN 
THEWISEWOODSHEFF 